

MALEFICENT'S PERSONALITY CHANGES IN ROBERT STROMBERG'S *MALEFICENT*

Tyas Wulandari^{1*}, Heri Dwi Santoso², Yesika Maya Ocktarani³
University of Muhammadiyah Semarang
Indonesia
tyaaswlndr@gmail.com

Abstract

Maleficent, directed by Robert Stromberg, tells about a good fairy that in time turns into evil, as she takes revenge on a man she loves after knowing that he betrays her. One of the issues that attract attention deals with the personality of the central character, Maleficent. The major problem in the study deals with what makes the personality changes as well as to what extent that it changes. The study aims at describing to what the influential factors of Maleficent's personality changes. The research uses eclectic research approach combining structural and psychological approaches. Meanwhile, qualitative descriptive method is used in the study with the implementation of library research for taking the data content analysis to analyze it. Results showed that in terms of importance, Maleficent was categorized as a main character; meanwhile, in case of role, she was categorized as either protagonist or antagonist. Maleficent is a dynamic character in accordance with the complexity of her personality. As for the characterization, two types of characterization were found such as direct and indirect characterizations. In the direct characterization of hers, Maleficent was described by the narrator as a fairy living in an area called the Moors. On the other side, several methods of indirect characterization employed showed that she the fairy responsible for protecting the life in the Moors. Results of the psychological analysis using Sigmund Freud's psychoanalytic showed that the Id of Maleficent was her desire to love and be loved sincerely; the ego was her will to curse Aurora but still loves Stefan. Meanwhile, the superego was her kindness forcing her to revoke the curse. Two ego defense mechanisms she used include projection, in form of her regret to Stefan projected to Aurora by cursing her, and repression, in form of relieving her anxiety by murdering Stefan.

Keywords: vengeful, Sigmund Freud's psychoanalytic theory, ego defense mechanisms

Introduction

Film is sequential combination of moving images that tells a story and that people watch on a screen or television. As for the differences between film and drama, film can be recorded and repeated so the audience can see many times, drama just play once on the stage and cannot be repeated, so the audience see directly (Klarer, 1999:57).

The supporting points of film are character and characterization. Character is subject that has an important role and supports the story, while the way of an author describes the character called as characterization (Aminuddin, 1987:79).

The researcher analyzes the personality changes of Maleficent because Maleficent has two personalities in the story. She is a good fairy but when she gets problem, she changes to be bad fairy.

Methodology

It is a descriptive qualitative research that includes content analysis and discourse analysis. Library research is applied to get the main data source. The data of this research are two kinds such primary datum, which is *Maleficent*. Meanwhile, the secondary data consist of previous research reports and other references.

Findings and Discussion

Structural Analysis

1. Maleficent as a Main, Protagonist, Round and Dynamic Character

Maleficent is a main character because she is a central character and she has problems in the story. The biggest problem of Maleficent is with Stefan. He betrays their friendship. Stefan comes to the moors and he steals Maleficent's wings in order to become a King and replaces King Henry as a recent

King of Human Kingdom. Stefan tries to betray Maleficent when he hears King Henry speaks that everyone who can steal the treasure of the Moors, so that he can be a King in the Kingdom.



Screenshot 1A



Screenshot 1B

King Henry : “When I ascended to the throne, I promise the people, one day we would take the Moors and its treasures. Each of you swore allegiance to me and to that cause.

Stefan : “Your Majesty.”

King Henry : “Defeated in battle. Is this to be my legacy? I see you waiting for me to die. It won’t be long. But what then? I will choose a successor to take the throne and care my daughter. Who among you is worthy? Kill the winged creature. Avenge me, and upon my death you will take the crown.

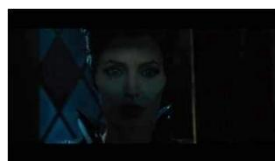
(Stromberg, 2014: 00:14:04-00:15:13)

From the screenshots above, the screenshot 1A shows that King Henry is laying down on the bed after Maleficent attacked him and he loses. The screenshot 1A is taken using medium shot technique because in the picture, King Henry is shown alone. In screenshot 1B is mentioned as two shot because in the picture there are two characters in one frame.

From the quotation above, because King Henry asks his soldiers to destroy the moors and the King’s promise, Stefan is interested to take the crown. So, he betrays Maleficent. He steals her wings and give to King Henry and those, he become a King successfully.

In terms of role, maleficent is a protagonist because she is a good fairy. It looks when she revokes the cursed after she cursed Aurora for a long time. Maleficent

start to love Aurora so, she revokes the cursed but it is not success because the cursed is immortal.



Screenshot 2A



Screenshot 2B

Maleficent : “I revoke the curse. Let it be no more. I revoke my curse! Let it be no more! I revoke my curse! Let it be no more! Let it be no more!”

Whispering voice: “This curse will last till the end of time”

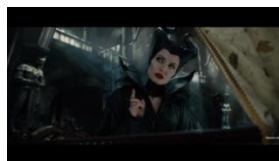
(Maleficent, 2014: 00:53:36-00:54:09)

The screenshots 2A and 2B describes about Maleficent when she revokes the curse but it fails. The screenshot 2A is taken using choker technique because it looks full head of Maleficent. The screenshot 2B is taken using two shots technique because there are two characters in the picture.

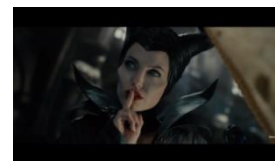
From the quotation above, Maleficent changes to be good fairy again because she loves Aurora. She changes and revokes the cursed of Aurora but it fails because the cursed is until forever.

a. Maleficent as Antagonist Character

Maleficent as antagonist character because she changes to be bad fairy. She takes revenge to Stefan and curses Stefan’s daughter. After Stefan steals her wings, she is revengeful because she thinks that Stefan betrays her.



Screenshot 3A



Screenshot 3B

Maleficent : “The princess shall indeed grow in grace and beauty, beloved by

all who met her. But, the sun sets on her 16th birthday, she will prick her finger on the spindle of a spinning wheel and fall into a sleep like death, a sleep from which she will never awaken. The princess can be woken from her death sleep, but only by the true love kiss. This curse will last till the end of time!”

(Stromberg, 2014: 00:31:04-00:33:00)

The screenshots 3A and 3B shows when Maleficent is cursing the baby and she sees Stefan and his wife that try to stop her. The screenshot 3A is taken using medium technique because it looks a half of Maleficent’s body. The screenshot 3B is taken using close-up technique because it is Maleficent’s head to shoulder.

From the quotation above, Maleficent changes to be bad fairy because she is revengeful with Stefan, and she replays with cursing Stefan’s daughter in her Christening day.

b. Maleficent as Round Character

Maleficent is round character because she has some complicated features of personality in the story. Some of the features are contradictive to the other. At the beginning, Maleficent is totally a good fairy likes a angel. She meets Stefan when they are child. Maleficent saves Stefan from the Moors’ guards, Balthazar.



Screenshot 4A



Screenshot 4B

Maleficent : Come out!”

Stefan : “No, they mean to kill me. And besides, they’re hideous to look at.”

Maleficent : “That’s extremely rude. Don’t listen to him, Balthazar. You’re classically handsome”

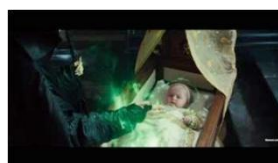
Maleficent : “It’s not right to steal, but we don’t kill people for it. Come out. Come out this instant!”

(Stromberg, 2014: 00:04:01-00:04:20)

The screenshot 4A, Maleficent is saying to Stefan and she asks him to out from the cave. The screenshots is taken using medium shot, it looks that Maleficent is single in the picture. The screenshot 4B is when Stefan is hiding in the cave and he scares to Balthazar, the screenshot 4B is taken using an over the shoulder technique, it shows from the back of Maleficent.

From the quotation, Maleficent is good fairy and sympathetic personality as a fairy because Maleficent is not scared when seeing human. It is the first meeting between Maleficent and Stefan in the Moors.

Maleficent as purely a good fairy changes into bad fairy because she wants to take revenge with Stefan after he steals her wings. Maleficent take revenge to Stefan through his baby girl when the Christened of the baby. Maleficent transforms become a revengeful fairy.



Screenshot 5A



Screenshot 5B

Maleficent : “The princess shall indeed grow in grace and beauty, beloved by all who met her. But, the sun sets on her 16th birthday, she will prick her finger on the spindle of a spinning wheel and fall into a sleep like death, a sleep from which she will never awaken. The princess can be woken from her death sleep, but only by the true love kiss. This curse will last till the end of time!”

(Stromberg, 2014: 00:31:04-00:33:00)

The screenshot 5A is when Maleficent is about to curse the baby, it looks from Maleficent’s hands, the screenshot is taken using medium shot

because its only shows half of the baby's body. The screenshot 5B is Maleficent curses the baby too. The mimic looks angry and the aura is out from her body. The screenshot 5B is taken using close-up, the picture only shows the head and shoulders of Maleficent.

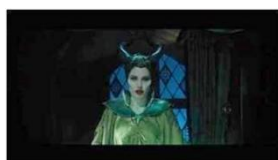
From the quotation, Maleficent changes to be revengeful fairy when she says this curse till the end of time, it seems that there is no kindness in her heart at this time. So, she has two features personalities in the story. From beginning she is a purely good fairy, but in the middle to the end of story she changes to be revengeful fairy.

c. Maleficent as Dynamic Character

Maleficent is a dynamic character, because she has changed in the story from beginning until the ending of story. She gets problem, so her personality changes. The beginning of the story, she was a good fairy, and changes become bad fairy, but the ending of the story she changes into good fairy. Her personality change is the reason why she mentions as dynamic character.



Screenshot 6A



Screenshot 6B

Maleficent : "I revoke the curse. Let it be no more. I revoke my curse! Let it be no more! I revoke my curse! Let it be no more! Let it be no more!"

Whispering voice: "This curse will last till the end of time"

(Stromberg, 2014: 00:53:36-00:54:09)

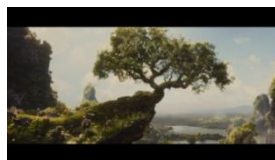
The screenshot 6A and 6B are when Maleficent revoking her curse to Aurora. It looks from the Aurora which is out from Aurora's body. the screenshot 6A is taken using two shot taken, there are Maleficent and Aurora in the picture. The screenshot B

is taken using medium shot, because the picture shows the half of Maleficent's body.

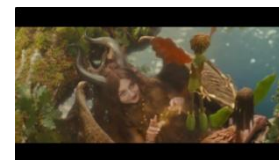
From the quotation above, Maleficent revokes her cursed because of her love with Aurora. Her personality changes again because she loves Aurora. Love can change Maleficent's revengeful mind, she regrets what she has done to Aurora.

1. The Characterization Analysis on Maleficent

Direct presentation is how the narrator in the story tells about Maleficent. Narrator tells about Maleficent, she comes from the Moors, where good treasures were. Maleficent is a fairy that has unusual spirit from the other fairies in the moors.



Screenshot 7A



Screenshot 7B

Narrator : "In a great tree on the great cliff in the moors lived one such spirit. You might take her for a girl, but she was not just any girl. She was a fairy."

(Stromberg, 2014: 00:01:22-00:01:35)

The screenshot 7A, it looks the view of the Moors because of the picture shows the around the Moors, it is mentioned as full shot. The screenshot 7B is shows the Maleficent is, she has horns. The screenshot 7B is taken using medium shot technique. It only shows head from chest of the character.

From the quotation above, Maleficent is a fairy who lives in the Moors and she has responsible to protect The Moors from Human which will Stole Moors' treasures. She has two horns on her head, since she is a kid.

The other ways to analyze characterization is indirect presentation. Maleficent saying is one of example of indirect presentation. Maleficent's saying shows that she's a responsibility fairy. She

lives in the Moors and she should protect the Moors from human kingdom which will attack them and take all the treasure. Maleficent fights with King Henry and beats him.



Screenshot 8A



Screenshot 8B

Maleficent : “Go no further!”
King Henry : “A King does not take orders from a winged elf.”
Maleficent : “You are no King to me.”
King Henry : “Bring me her head.”
Soldiers : “Battalion! Advance!”
Maleficent : “Arise and stand with me.”
(Stromberg, 2014: 00:10:44-00:11:21)

The screenshot 8A is Maleficent angry when the Human Kingdom comes to the Moors. The screenshot is taken using close-up technique, because it looks in the picture, Maleficent’s head and shoulders. The screenshot 8B shows the King Henry and his soldiers want to attack the Moors. The screenshot is taken using medium shot technique.

From the quotation above, Maleficent is responsibility fairy and protects the Moors with anything ways that she can do. Maleficent thinks that The Moors’ creature aren’t stolen and dominated by Human Kingdom.

Freudian Psychoanalysis on Maleficent

1. Maleficent Personality Structure

a. The Id

Maleficent wants to be loved by Stefan sincerely but Stefan’s ambition to be King in Human Kingdom has broken it. Stefan goes away from Maleficent and she is alone in The Moors. Stefan comes back to the Moors but he just makes Maleficent disappointed and he is betrayed Maleficent. He steals her wings.



Screenshot 9A



Screenshot 9B

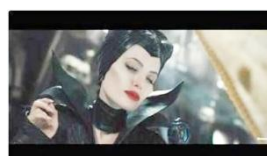
Stefan : “Maleficent!”
Maleficent : “So, how is life with human?”
Stefan : “Maleficent, I’ve come to warn you. They mean to kill you. King Henry will stop at nothing. Please, you have to trust me.”
(Stromberg, 2014: 00:15:42-00:16:15)

The screenshot 14A is taken using medium shot technique. It shows Stefan from head to waist. The screenshot shows that Stefan comes to the Moors and he is calling Maleficent. The screenshot 14B is taken over the shoulders. The screenshots tells about Maleficent angry when Stefan comes. From the quotation above, Maleficent’s instinct, she wants to be loved by Stefan has lost. Stefan betrays her and makes her hurts. She feels lonely and revenged, she will revenge to Stefan.

b. The Ego

The ego is the self of somebody, including his/her decision when facing some problems. The ego of Maleficent is her decision to take revenge to but she still love Stefan. Maleficent revenges

Stefan’s baby girl, the truth that, she loves the baby girl because she hates with Stefan, so she revenge Stefan by cursed Aurora. Maleficent does not care about Stefan and his wife and all guests in the Christening. She curses Aurora in front of all people.



Screenshot 10A



Screenshot 10B

Maleficent : “The princess shall indeed grow in grace and beauty, beloved by all who met her. But, the sun sets on

her 16th birthday, she will prick her finger on the spindle of a spinning wheel and fall into a sleep like death, a sleep from which she will never awaken. The princess can be woken from her death sleep, but only by the true love kiss. This curse will last till the end of time!”

(Stromberg, 2014: 00:31:04-00:33:00)

From the screenshots above, the screenshot 15A, Maleficent’s mimic looks angry when she sees the baby girl, the eyes sees revengfull. The screenshot 15A is taken using close-up technique because Maleficent looks from head to shoulders. On the screenshot 15B, Maleficent’s aura is out from her body when she is cursing. The screenshot is taken using medium shot technique. It shows Maleficent’s head to waist.

From the quotation above, Maleficent forgets all memories with Stefan, and curses the baby revengefully. She does it in order Stefan know how angry she is, and disappointed.

c. The Superego

The superego is moral values which guides someone to do something. Maleficent basically grows as a nice fairy. The superego of Maleficent is very dominant when she revokes her cursed because she starts to love Aurora. Although Maleficent has cursed Aurora, in the other side she watches Aurora every day. And start from there, she likes and loves Aurora. When Aurora visits The Moors, she plays happily with others fairies, and loves beginning grow up on Maleficent. She tries to revoke her cursed when Aurora is sleeping.



Screenshot 11A



Screenshot 11B

Maleficent : I revoke the curse. Let it be no more. I revoke my curse!
Let it be no more! I revoke

my curse! Let it be no more!
Let it be no more!”

Whispering voice: “This curse will last till the end of time”

(Stromberg, 2014: 00:53:36-00:54:09)

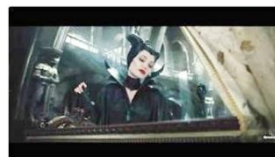
From the screenshots above, on the screenshot 16A, Maleficent is revoking the cursed and Aurora is sleeping. The screenshot is taken using two shot technique, there are two characters on the picture. On the screenshot 16B, Aurora is sleeping on the bed, and her body is out of the aura, it looks for the colors on the screenshot, the screenshot 16B is taken using medium shot technique, it looks a half of Aurora’s body.

From the quotation above, loves can change Maleficent. From the beginning of story, Maleficent is a good fairy and changes to be bad fairy, and she changes again to be good fairy. It’s all because of the power of love. She changes become bad fairy because she loves Stefan but he betrays her. Now, she revokes her cursed because she loves Aurora and she regrets what she has done.

2. Maleficent’s Ego Defense Mechanisms

a. Projection

The projection of Maleficent, she projects her revenge to Stefan’s daughter. Maleficent is angry when her wings are stolen by Stefan, while she wake up from her sleep, she sees that her wings are nothing. From the problem she felt anxious. Maleficent projects her anger to Stefan’s baby girl. She revenges to Stefan but she wreaks to Aurora. She does it because she hates Aurora’s father.



Screenshot 12A



Screenshot 12B

Maleficent : “The princess shall indeed grow in grace and beauty, beloved by all who met her. But, the sun sets

on her 16th birthday. She will prick her finger on the spindle of a spinning wheel and fall into a sleep like death, a sleep from which she will never awaken. The princess can be woken from her death sleep, but only by the true love kiss. This curse will last till the end of time!”

(Stromberg, 2014: 00:31:04-00:33:00)

From the screenshot above, Maleficent’s eyes looks angry when she sees the baby in the box on the screenshot 17A, the screenshot is taken using medium shot technique. On the 17B, Stefan and his wife look panic when Maleficent sees the baby. The screenshot 17B is taken using three shot technique, in the picture looks the three of characters.

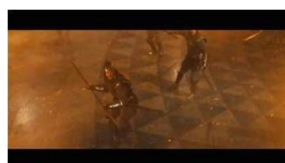
From the quotation above, Maleficent changes object of her revenge. She curses Aurora for one reason. She hates Stefan. And she felt anxiety and confused what should she do, so she cursed the Stefan’s baby girl. In order Stefan knows how angry she is. However, she is not able recover from the anxious by doing this. That is why she uses the second of ego defense mechanism, repression.

b. Repression

After she fails using projection to solve her conflicts, Maleficent uses repression as her ego defense mechanism. The repression is as the next of ego mechanism that Maleficent uses. The repression Maleficent is when she kills Stefan until he dies. She does it to decrease her anxiety. Maleficent fights with Stefan and his soldiers in the Kingdom. Maleficent kills Stefan when Stefan tries to kills her, Maleficent pushes Stefan, so he fall down from the top of the Kingdom.



Screenshot 13A



Screenshot 13B

Stefan : “Kill her!”
The soldiers : “Kill her! Shoot!”
Stefan : “Shoot her!”

(Stromberg, 2014: 01:23:09-01:23:46)

The screenshot 18A is Stefan’s expression when he sees Maleficent’s wings are back. The screenshot 18A is taken using close-up technique because it is shown Stefan’s face to shoulders. The screenshot 18B is taken using full shot technique. It shows full of the soldiers from head to toe. The screenshot is when the soldiers are trying to kill Maleficent.

From the quotation above, Maleficent kills Stefan as repression in order she can decrease her anxiety and Stefan and his soldiers can not disturb her and the Moors. Maleficent feels satisfy after she kills Stefan. She and the other fairies can live happily, even though Stefan is not with her.

Conclusion

The analysis shows that Maleficent is a main character because she has problems in the story. Because of she is a good fairy and changes into bad fairy, she is as protagonist and antagonist character. Maleficent as round character because she has some features. And Maleficent is a dynamic character because her personality changes in the story. There are five elements of plot analysis, exposition, complicating action, climax, falling action, and resolution.

Maleficent’s personality structure that is found on this research is the id of Maleficent is Maleficent’s instinct that she wants to be loved by someone but she is betrayed by Stefan. The ego of Maleficent, Maleficent wants to revenge Aurora but she loves her. And the superego of Maleficent is shown when she revenges Aurora but she loves her and finally Maleficent revokes the cursed. Maleficent’s problem that causes she changes is Stefan betrays her and steals her wings. She changes to be revengeful fairy. There are two ego defense mechanisms that Maleficent uses. They are projection and repression.

References

- Alwisol. 2009. *Psikologi Kepribadian*. Malang: UMM Press.
- Aminuddin. 1987. *Pengantar Apresiasi Karya Sastra*. Malang: Sinar Baru.
- Brown, Blain. 2004. *Cinematography: Theory and Practice: Image Making for Cinematographers and Directors*. Oxford: Focal Press..
- Hall, Calvin S. 1954. *A Premier of Freudian Psychology, United States of America: The New American Library*.
- Klarer, Mario. 1999. *An Introduction to Literary Studies*, English: Routledge Taylor&Francis Group.
- Perrine, Laurence. 1988. *LITERATURE: Structure, Sound, And Sense* (fifht Edition). San Diego: Harcourt Brace Jovanovich Publisher.
- Stromberg, R. (Director). (2014). *Maleficent* [Motion Picture]. United States.