

GRICEAN MAXIM ANALYSIS OF BEATRICE'S UTTERANCES IN *DIVERGENT* MOVIE

Sri Winda Utami^{1P}, Yunita Nugraheni², Diana Hardiyanti²

University of Muhammadiyah Semarang

Indonesia

sriwindau@gmail.com

Abstract

The main problem of research focuses on how are the implementation of Paul Grice cooperative principle of Beatrice's utterances in *Divergent* movie. Cooperative principle is aimed to get the effective communication as required. Violating of cooperative principle, it means that the communication result is not effective. The research is purposed to identify the implementation of Paul Grice cooperative principle of Beatrice's utterances in *Divergent* movie. The method of research is observing *Divergent* movie and transcribing the data by purposive sampling. The collected data are analyzed by theoretical of cooperative principle and context of situation approach. The result of research shows that the cooperative principle is not always obeyed by Beatrice. Based on 38 data of Beatrice's utterances, submissive of cooperative principle consists of 61 % data, while violation of cooperative principle consists of 39% data. The percentages are; submissive of cooperative principle content with 37% quantity maxim, 5% quality maxim, 11% relation maxim, 8% manner maxim. Violation of cooperative principle, they are: 18% quantity maxim, 8% quality maxim, 5% relation maxim, 8% manner maxim. It can be concluded that submissive of cooperative principle are mostly obeyed by Beatrice.

Keywords: movie, utterances, cooperative principle, maxim

Introduction

Language is the mean of communication which is very important in human life to communicate each other. The way giving message or what people thought is using language. Based on linguistics side, there are two kinds text of communication; they are spoken text and written text. Spoken text means that it is orally delivered, while written text means that it is delivered by some tools and process to show the message, for example the writer and the interpretation (H.G. Widdowson, 2007:7).

According to H. Paul Grice (1975), the purpose of cooperative principle is to get effective communication as informative as clearly. It has four maxims; they are quantity maxim, quality maxim, relation

maxim and manner maxim. The researcher focuses on knowing the implementation of Paul Grice cooperative principle. This research focuses on spoken text which allows participants to cooperate each other to make conversation runs well. Movie is one of spoken text by its conversation. A movie, also called a film is a popular medium; it is about the reality problem of tentative assumption according to phenomena society which has the result on specific values (Warren Buckland, 2009:6).

Beatrice, often called Tris, is the main character in *Divergent* movie. Beatrice's utterances are chosen as the object research because she is a dominant woman who mostly involved in all conversation. She has influence to wide

society by her *divergent* status. *Divergent* means having different status of other people. It makes Beatrice having more than one faction. The main problem of research is the implementation of Paul Grice cooperative principle of Beatrice's utterances in *Divergent* movie. The researcher focuses on research context of situation and Gricean maxim to describe Beatrice's utterances. The effective communication is based on the way Beatrice giving the respond toward the expression purposed to her. It can be assumed that implementing of cooperative principle makes an effective communication to get information as necessary, while doing violation of cooperative principle does not make effective communication caused by some reasons and purposes. Based on the background of the problem, the questions of the research as follows; how are the implementation of Gricean Maxim of Beatrice's utterances in *Divergent* movie?

Methodology

1. Method of Data Collection

The method used to collect the data as follows;

- a. Watching and observing *Divergent* movie. The researcher identified context of situation to analyze the data. The first step, the researcher observed *Divergent* movie to get clear description of the contexts.
- b. Doing screenshot the live conversation of *Divergent* movie as the fact. By the screenshot, it made the researcher easy to identify the data which were needed.
- c. Noting Beatrice's utterances. According to the research of cooperative principle, the researcher focused on paying attention to take a note of cooperative principle inconclusive of Beatrice's utterances in conversation.
- d. Making Classification of the selected utterances according the context of situation and Gricean maxim.
- e. Making identification of the selected utterances according context of situation

- theory by M.A.K Halliday and cooperative principle by Paul Grice.
- f. Transcribing the data which were selected to be analyzed.

2. Population and Sample

The populations of this research were all Beatrice's utterances in conversation of *Divergent* movie. The researcher collected Beatrice's utterances to be analyzed based on the theories.

Based on the sampling method, the purposive sampling had the specific purposes of collecting the data based on theory approach (Dornyei, 2007:126). Beatrice's utterances, the sample of data, were selected by the purposes of theory approach. The sample was chosen based on the purpose of Paul Grice cooperative principle implementation. The sample of research was all Beatrice's utterances which consist of submissive and violation of cooperative principle.

3. Method of Data Analysis

The researcher had some methods to do analysis. There were:

- a. Reading all the transcribed data to understand the context of situation.
- b. Making classification of Beatrice's utterances which were selected to be analyzed based on the submissive and violation of cooperative principle.
- c. Analyzing the data by Gricean maxim theory. The analysis focused on the implementation of Gricean maxim in Beatrice's utterances in *Divergent* movie.

Findings and Discussion

The researcher finds data of Beatrice's utterances to be analyzed according to the context of situation and Gricean maxim. The data analyses are below:

1. Submissive of Cooperative Principle

a. Submissive of Quantity Maxim

Datum (1 – 00:4:46 – 00:4:56 - S)

- Natalie : Are you nervous?
Beatrice : No. Were you? For your test?
Natalie : Mmmm. No. I was terrified.

Based on the movie conversation, the conversation happens in home. The situation is informal. They have a talk and sit on the chair. The conversation holds between mother and daughter. Natalie is mother while Tris is a daughter. The context is preparing for faction test. Tris will do faction test. Natalie asks about Tris feeling. It is shown on the conversation “*Are you nervous?*”. Tris asks to her mother again to make sure how about the faction test. Natalie answers that is very terrified. It means the faction test is very serious process which has to be done for teenagers to consider their faction.

The conversation is as the rule of Gricean Maxim. Based on Natalie’s question “*Are you nervous?*” then Tris answers “No.” It means that Tris does submissive of quantity maxim because she gives the information which is needed by Natalie. Natalie only wants to know about Tris feeling. Is she nervous or not. Based on the conversation Tris gives clear answer as required according to her answer is “No”.

(Datum (3 - 00:08:11 – 00:08:54 - S)

- Tori : What is it with you Abnegation and Mirror?
- Beatrice : We reject vanity
- Tori : Yes, I know. Sit down
- Beatrice : (take the seat and notice at Tori’s tattoo)
- Tori : I’m Tori, I’ll be administrating your test. You’ll be offered a series of choices to test your aptitude for each faction until you get one result. I wouldn’t sweat it, ninety five percent get the faction their origin and by the looks of you. (Then Tori gives Tris a glass of blue liquid to drink)
- Beatrice : What is it?
- Tori : Bottoms up.
- Beatrice : (Drink a glass of blue liquid)

The conversation holds in a test room, which is in formal situation between the participant and examiner. Beatrice is the participant of faction test, while Tori is the examiner. Beatrice gets in a test room and she looks herself in a mirror. The relation of

mirror with Beatrice is Abnegation faction reject the vanity. It shows in conversation of “*What is it with you Abnegation and Mirror?*” Abnegation is forbidden to look at mirror in long time. Beatrice does the first faction test which will determine her faction. Beatrice just follows Tori’s instruction while doing the test. For example, Beatrice has to drink blue liquid for her hallucination test to determine her faction. Hallucination test shows about how Beatrice solves the problem in her hallucination which likes real. The result how Beatrice solves the problem in hallucination determines her faction test.

Beatrice does obeying cooperative principle of quantity maxim on her utterances. Based on Tori’s question of “*What is it with you Abnegation and Mirror?*”, Beatrice gives the respond of “*We reject vanity*”. The respond is very clear as required according to the question. There is no more informative answer. Beatrice declares that she rejects vanity based on her faction as the rule of Abnegation faction.

(Datum (4 – 00:13:30 – 00:13:40 – S)

- Caleb : What happened to you today? Where did you go after your test?
- Tris : I got sick so they sent me home early.
- Caleb : did you finish your test?
- Tris : Mm-hhm.
- Caleb : What was your result?
- Tris : What was yours?
- Caleb : (smiles and go to the family are having dinner)
- Andrew : Why did you just leave without telling anybody?
- Tris : I was sick.

The conversation holds in home. The situation is informal because the participants are Beatrice’s family. They are Caleb as brother, Natalie as mother and Andrew as father. Beatrice prepares meals for dinner and Caleb helps her. The conversation talks about the result of faction test and why Beatrice just keeps silent without informing her family about her faction test. According

to the movie Beatrice has the divergent status so Beatrice has go home early without informing anybody about her test result. Beatrice has to make it secret for not telling anybody about her result is divergent.

Based on Caleb's question, it is "Did you finish your test?", and then Beatrice's respond is "Mm-hhm", Beatrice shows that she obeys the cooperative principle of quantity maxim. Beatrice gives the clear respond without other information according to the question only needs the answer yes or no respond. Beatrice says "Mm-hhm", it means that she does finish her test. The next question is "Why did you just leave without telling anybody", then Beatrice gives the respond of "I was sick". Based on Beatrice's respond, it obeys the cooperative principle of quantity maxim. It is required according to the question. Beatrice explains well why she leaves the test and goes home because she is sick.

b. Submissive of Quality Maxim

Datum (13 - 1:07:59 – 1:08:29– S)

- Beatrice : Mom, You can't be here.
Natalie : I know, but you're in danger.
Beatrice : What?
Natalie : I have to ask you something. You weren't sick the day you took your aptitude test, were you ?
Beatrice : Why?
Natalie : What were your test results? Honey, it's okay, you can tell me.
Beatrice : They were, they were inconclusive.
Natalie : Divergent? You can't tell anyone. You can't tell your friends, your instructors, you can't trust anyone.

The conversation holds in *Dauntless* area when Beatrice does some work moving the bags to truck. Beatrice sees a light of mirror then follows it. Beatrice meets Natalie, her mother. The situation is informal and very secret. They meet in hidden place where there is nobody knows. They talks about Beatrice's result of the first faction test. Natalie makes sure what the real result of Beatrice test. Actually Beatrice is *divergent* because her test result is

inconclusive. Natalie reminds Beatrice to keep secret her divergent status, because *divergent* people are threat for *Erudite* faction and they will be killed by *Erudite* faction.

Beatrice gets the question "What were your test results? Honey, it's okay, you can tell me". It is really hard to lie everything with the mother when the mother is forced her to admit her test result. It shows on Beatrice respond, "They were, they were inconclusive". Here is Beatrice does obeying quality maxim, because Beatrice gives the real information according to her test result. The first test results are inconclusive, her test result shows that she match to all faction. Mostly she matches to *Erudite*, *Abnegation* and *Dauntless*. While in datum (16 - 1:15:52 - 1:16:47 – V), Beatrice does not give the real information to Four when he asks to Beatrice about her test result. Beatrice lies to Four that hers test result is Abnegation. Here is the factor why Beatrice does obeying and violating cooperative principle. Beatrice gives the real information and be honest to her mother. Beatrice lies to Four, her instructor in *Dauntless*, because it is danger for her to tell her test result.

2. Violation of Cooperative Principle

(Gricean Maxim)

a. Violation of Quantity Maxim

Datum (2 - 00: 05:47 – 00:05:53 -V)

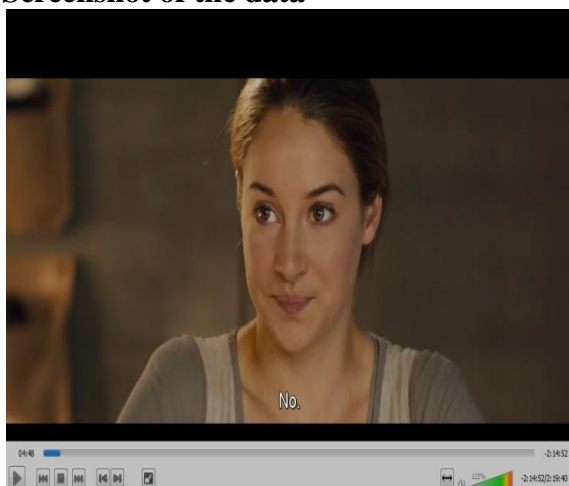
- Caleb : Beatrice, do you wanna get the other bags too?
Beatrice : Sorry
Caleb : What if she'd been blind or an amputee? Would you have helped her then?
Beatrice : I was thinking about helping her
Caleb : It's not that hard.

The conversation holds on the way Tris and Caleb goes to faction test registration. The situation is informal. Tris is walking on the rooftop of the house while Caleb has got down on the ground. Caleb is Tris's brother. There is also an old woman

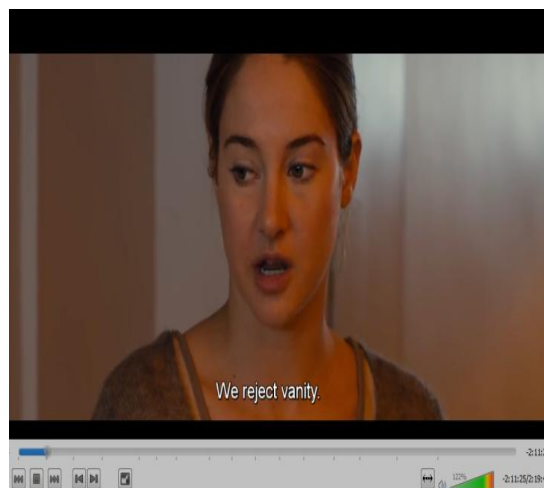
which is helped by Caleb. In this case, the old woman is not concluding in conversation. The old woman just keeps silent and does her activities because she is as the figurant and faction less in this movie. Faction less, it means the lower faction or lower social class. The conversation holds when Caleb helps the old woman bring some bags. Tris just looks at Caleb while actually there are many people who bring bags or goods in bad condition. Based on the conversation of “*Beatrice, do you wanna get the other bags too*”, Caleb asks Tris to help them.

The next question is “*What if she’d been blind or an amputee? Would you have helped her then?*”, Tris answers “*I was thinking about helping her*”. Tris violates cooperative principle of quantity maxim because her answer is too informative. She has to answer “*Yes, I will*”, or “*Yes, sure*”. Based on the conversation, Tris gives more information that she is thinking to help them. The answer violates cooperative principle of quantity maxim. The answer is too informative than is required.

Screenshot of the data



Datum (1 – 00:4:46 – 00:4:56 - S)



(Datum (3 - 00:08:11 – 00:08:54 - S)

Conclusion

It is difficult for always obeying all cooperative principle in communication caused by some factors of situational context. Based on the result of analysis Beatrice’s utterances in conversation of *Divergent* movie, it can be concluded that Beatrice does not implement all cooperative principle in her utterances, but mostly, Beatrice does obeying quantity maxim. It can be said that Beatrice has done effective communication by obeying cooperative principle of quantity maxim. While the others result are Beatrice does violations of cooperative principle. Here are the result of percentage; submissive of cooperative principle content with 37% quantity maxim, 5% quality maxim, 11% relation maxim, 8% manner maxim. Violation of cooperative principle, they are 18% quantity maxim, 8% quality maxim, 5% relation maxim, 8% manner maxim. It can be concluded that submissive of cooperative principle are mostly obeyed by Beatrice, so the result of communication is effective as required.

References

- Burger, Neil (Director). (2014). *Divergent*. United States: Summit Entertainment.
- Dornyei, Zoltan. (2007). *Research Method in Applied Linguistics*. New York: Oxford University Pers.

- Yule, George. (1996). *Pragmatics*. Oxford: Oxford University Pers.
- Widowson, H.G. (2007). *Discourse Analysis*. Oxford: Oxford University Pers.
- Buckland, Warren. (2009). *Film Theory and Contemporary Hollywood Movies* New York: Routledge
- Sobhani, Arezu & Saghebi, Ali. 2014. *The Violation of Cooperative Principles and Four Maxims in Iranian Psychological Consultation*.
<http://file.scirp.org/pdf/OJML2014021416072294.pdf>, accessed: January, 22nd 2017.
- Wira, Sang Nyoman Bagus Satya. 2014. *Conversational Analysis In A Movie Entitled "Life of PI" Written By David Magee: A Context Situation and Gricean Maxim*.
<http://ojs.unud.ac.id/index.php/sastra/article/viewFile/12399/8571>, accessed: January, 22nd 2017
- Halliday, M.A.K. & Hasan. 1989. *Language, context and text : Aspect of language in a social-semiotic perspective*. Victoria : Deakin University.